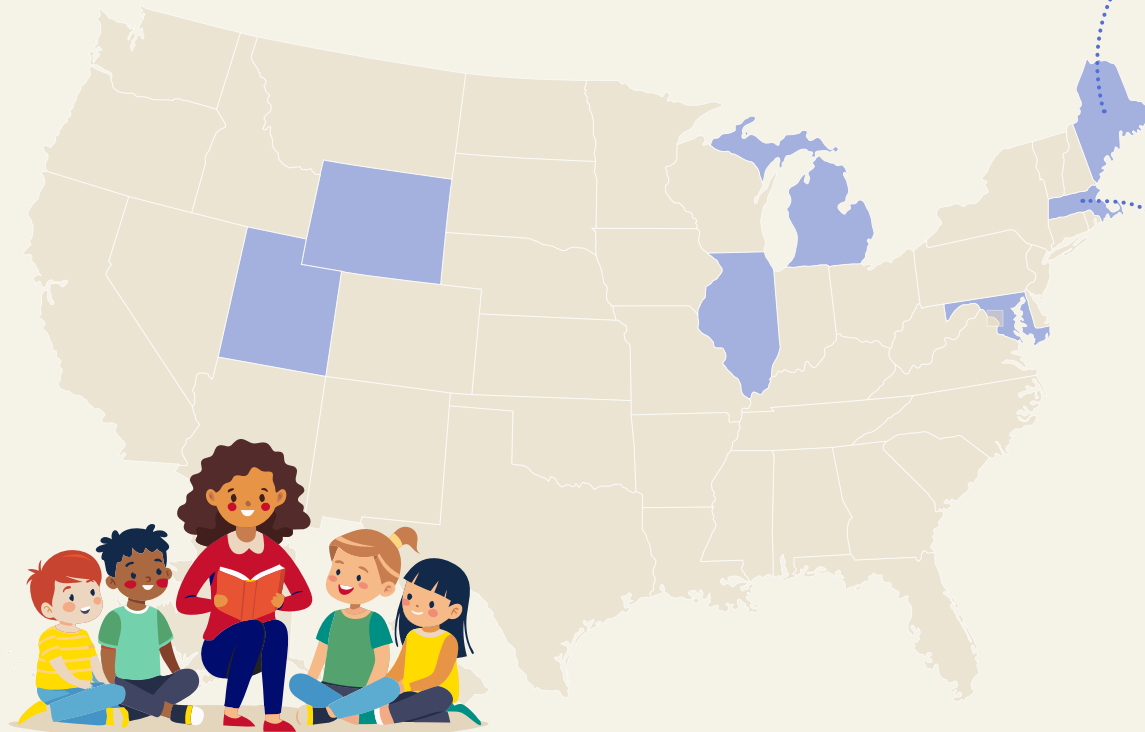


From ideas to impact

Center for Early Learning Funding Equity (CELFE) designs early learning funding systems with children and families at the center. Here's a look at what we've been up to...

1 PARTNERING WITH STATES

Since 2021, we've helped eight states rethink their early childhood education (ECE) financing strategies to improve the quality of care and learning for the nation's youngest children.



CELFE brings understanding of all the various perspectives in this space, from policymaking to advocacy to research. Not only does it yield a strong analysis that's useful to us, but it helps us navigate implementation.”

Ana Hicks
[Maine] Governor's Office of Policy Innovation and the Future

CELFE's analysis showed there wasn't a reason for us to have so many different rates and regions. We ended up consolidating and simplifying, but also making substantial increases to our investments in historically underfunded parts of the state.”

Amy Checkoway
Massachusetts Department of Early Education & Care

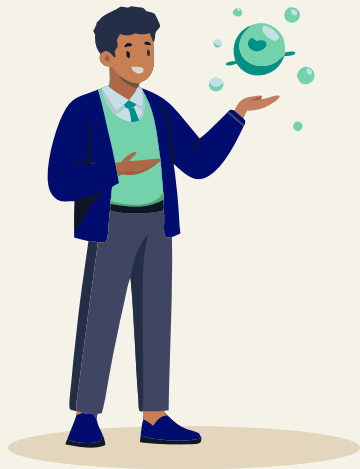


\$2.5B
in ECE funding
impacted
in 2024



CELFE IN REVIEW

2 CREATING NEW TOOLS



We make ECE data more accessible by building web-based tools for legislators, advocates, researchers, media, and other stakeholders.

[The Chicago Early Childhood Integrated Data System \(CECIDS\)](#) provides a comprehensive picture of every child across programs in Chicago—Head Start, child care, pre-k, and home visiting.

[The Shortchanged Project](#) tracks public investment in early learning, providing a deeper analysis of investments nationally, state-by-state, and over time. *Website coming soon!*



[Watch the Launch Webinar](#)

You don't need one hundred facts to advocate, you need three or four good ones. And this is one of them.

Joan Lombardi
Stanford Center on Early Childhood

3 BUILDING KNOWLEDGE



We researched, developed, and shared 35 resources on the state of early care and education funding to help build the field's knowledge of cost modeling and financing best practices.

[This policy brief](#) with Chapin Hall examines minimum wage increases and the impact on the child care workforce.

[This foundational funding brief](#) provides a national picture of innovation in early childhood funding.

In 2024, we also broadened communications and expanded our reach.

- 15 Presentations
- 4 Cost Modeling Technical Network Convenings with 50+ participants
- 2 Animated Videos

[Watch the First Video](#)

[Watch the Second Video](#)

2K+
LinkedIn
followers

600+
mailing list
subscribers



Want to learn more?

celfe.org

